



Morecambe Offshore Windfarm: Generation Assets Environmental Statement

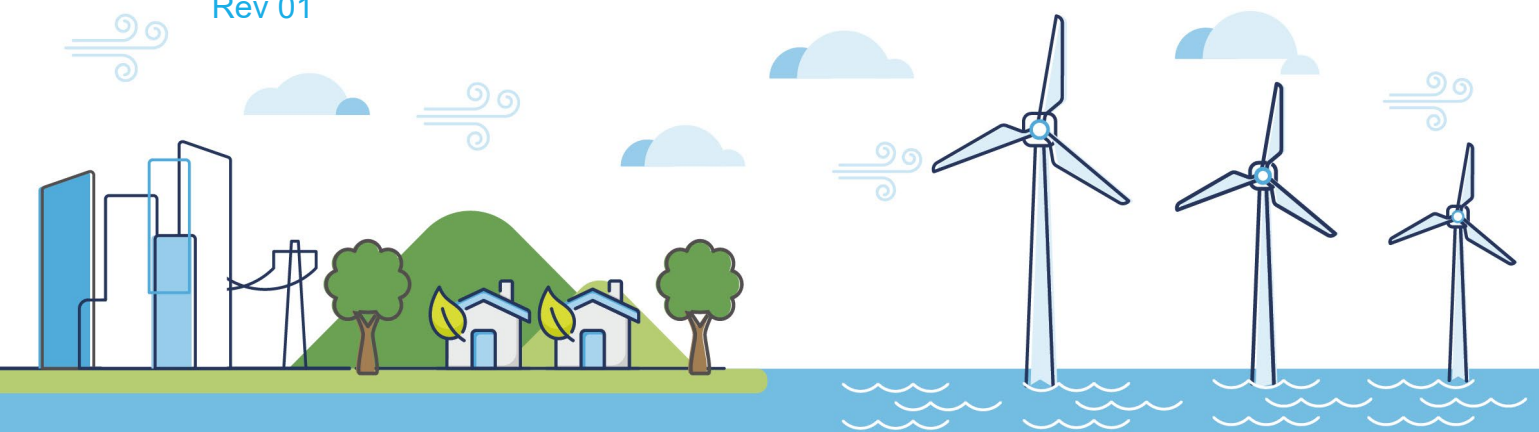
Volume 5

Chapter 18 SLVIA Figures (Part 31 of 34)

PINS Document Reference: 5.3.18.31

APFP Regulation: 5(2)(a)

Rev 01



Document History

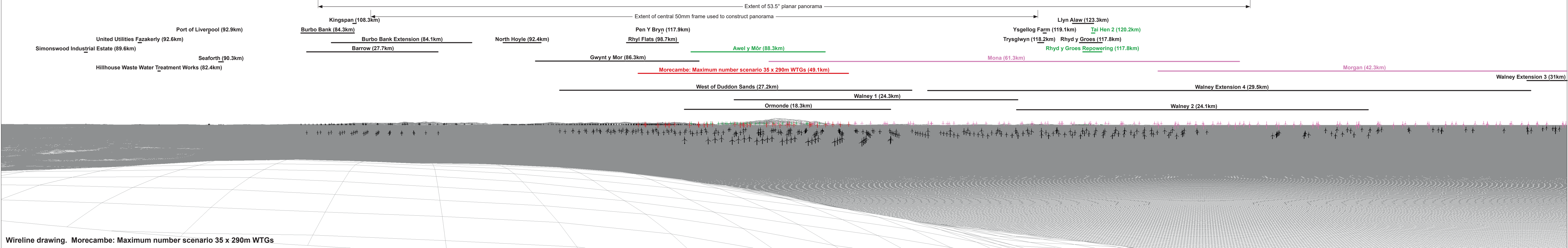
Doc No	MOR001-FLO-CON-ENV-FIG-1180	Rev	01
Alt Doc No	PC1165-RHD-ES-XX-DG-Z-0018		
Document Status	Approved for Use	Doc Date	May 2024
PINS Doc Ref	5.3.18.31	APFP Ref	5(2)(a)

Rev	Date	Doc Status	Originator	Reviewer	Approver	Modifications
01	May 2024	Approved for Use	Royal HaskoningDHV	Morecambe Offshore Windfarm Ltd	Morecambe Offshore Windfarm Ltd	n/a



Baseline photograph

This image provides landscape and visual context only



Wireline drawing. Morecambe: Maximum number scenario 35 x 290m WTGs

OS reference:	313523 E 485430 N	Horizontal field of view:	90° (cylindrical projection)	Camera:	Canon EOS 6D
Eye level:	600.54 m AOD	Principal distance:	522 mm	Lens:	EF50mm f/1.4 USM
Direction of view:	201°			Camera height:	1.5 m AGL
Nearest turbine:	49.1 km			Date and time:	10/08/2022, 08:45:38

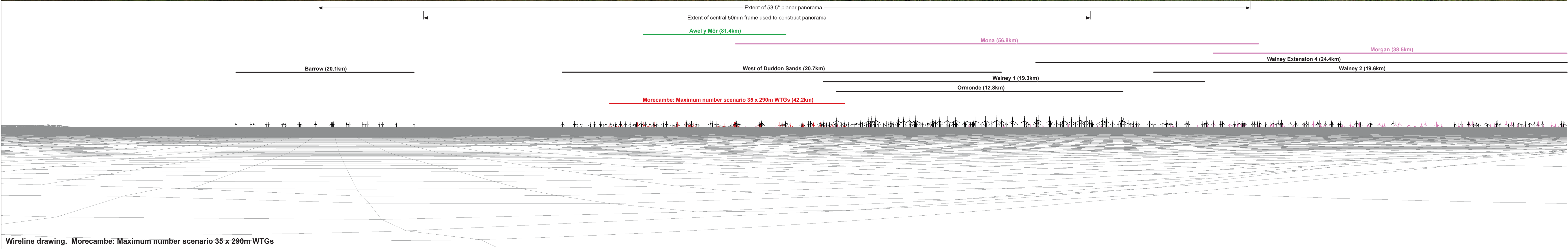
Figure: 18:48
Viewpoint 1: Black Combe

© Crown copyright and database rights (2024) Ordnance Survey 0100031673.



Baseline photograph

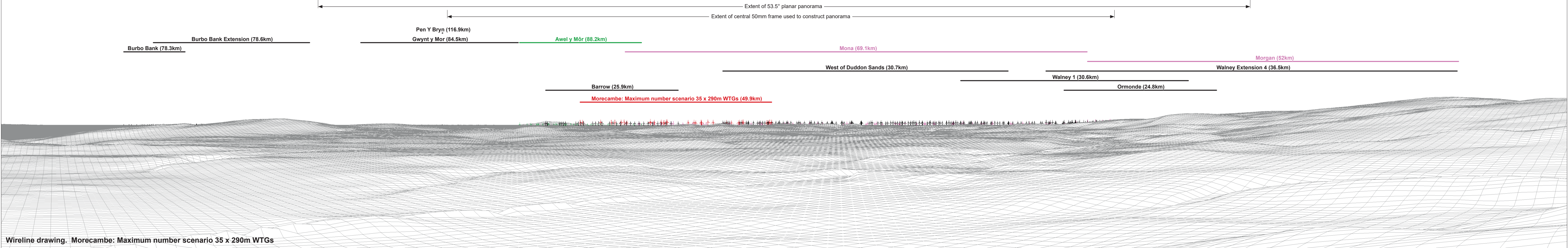
This image provides landscape and visual context only



Wireline drawing. Morecambe: Maximum number scenario 35 x 290m WTGs

OS reference:	314743 E 477860 N	Horizontal field of view:	90° (cylindrical projection)	Camera:	Canon EOS 5D Mark II
Eye level:	9.41 m AOD	Principal distance:	522 mm	Lens:	EF50mm f/1.4 USM
Direction of view:	206°			Camera height:	1.5 m AGL
Nearest turbine:	42.2 km			Date and time:	08/08/2022, 17:02

Figure: 18:49
Viewpoint 2: Haverigg Point
© Crown copyright and database rights (2024) Ordnance Survey 0100031673.



OS reference:	329457 E 479068 N	Horizontal field of view:	90° (cylindrical projection)	Camera:	Canon EOS 6D
Eye level:	132.02 m AOD	Principal distance:	522 mm	Lens:	EF50mm f/1.4 USM
Direction of view:	222°			Camera height:	1.5 m AGL
Nearest turbine:	49.9 km			Date and time:	22/06/2022, 18:14

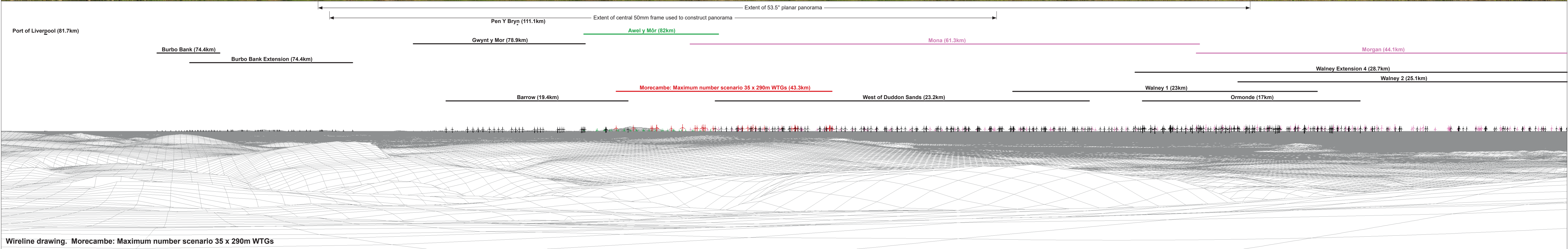
Figure: 18:50
Viewpoint 3: Ulverston (Hoad Monument)

© Crown copyright and database rights (2024) Ordnance Survey 0100031673.



Baseline photograph

This image provides landscape and visual context only



Wireline drawing. Morecambe: Maximum number scenario 35 x 290m WTGs

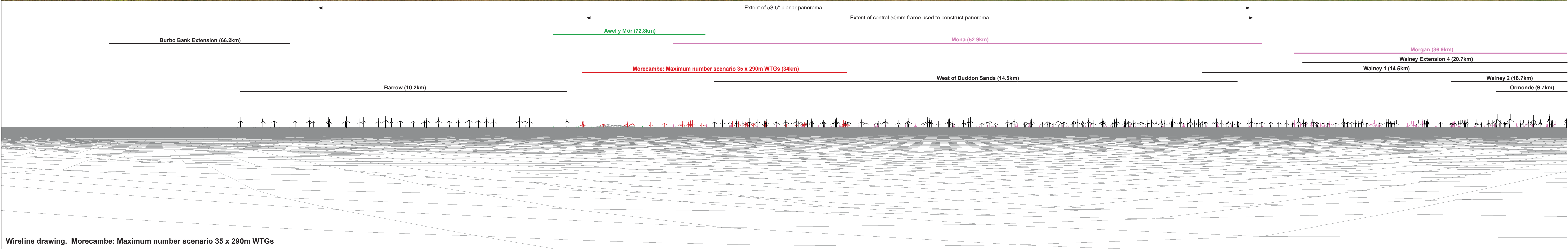
OS reference:	322397 E 475617 N	Horizontal field of view:	90° (cylindrical projection)	Camera:	Canon EOS 6D
Eye level:	120.65 m AOD	Principal distance:	522 mm	Lens:	EF50mm f/1.4 USM
Direction of view:	215°			Camera height:	1.5 m AGL
Nearest turbine:	43.3 km			Date and time:	22/06/2022, 19:20

Figure: 18:51
Viewpoint 4: High Haume Farm (Dalton-in-Furness)
 © Crown copyright and database rights (2024) Ordnance Survey 0100031673.



Baseline photograph

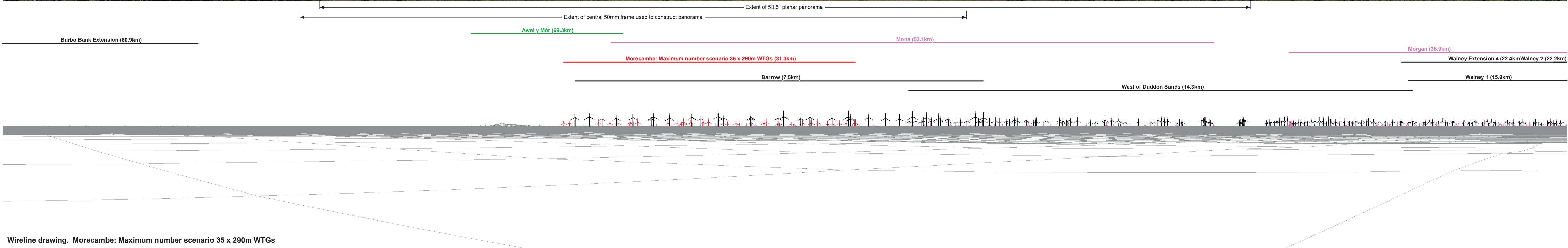
This image provides landscape and visual context only



OS reference:	317848 E 467524 N	Horizontal field of view:	90° (cylindrical projection)	Camera:	Canon EOS 6D
Eye level:	14.49 m AOD	Principal distance:	522 mm	Lens:	EF50mm f/1.4 USM
Direction of view:	216°			Camera height:	1.5 m AGL
Nearest turbine:	34 km			Date and time:	23/06/2022, 06:28

Figure: 18:52
Viewpoint 5: Walney Island (Biggar Bank Road)

© Crown copyright and database rights (2024) Ordnance Survey 0100031673.



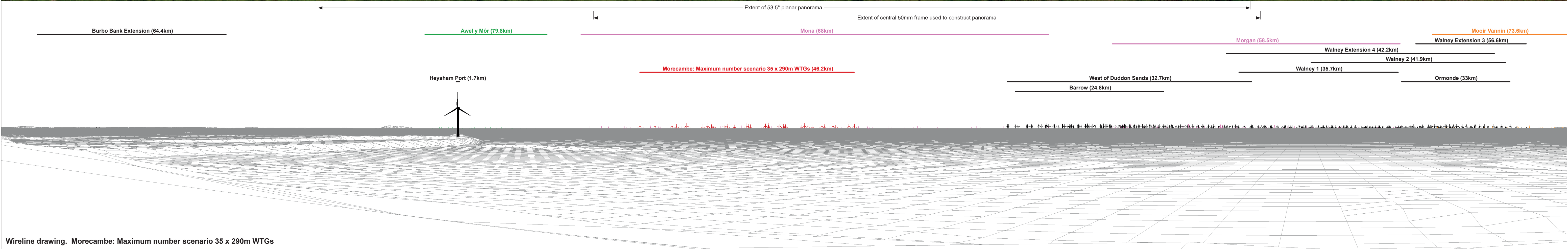
OS reference:	321106 E 462123 N	Horizontal field of view:	90° (cylindrical projection)	Camera:	Canon EOS 6D
Eye level:	9.51 m AOD	Principal distance:	522 mm	Lens:	EF50mm f/1.4 USM
Direction of view:	225°			Camera height:	1.5 m AGL
Nearest turbine:	31.3 km			Date and time:	23/06/2022, 07:04

Figure: 18:53
Viewpoint 6: South Walney Nature Reserve



Baseline photograph

This image provides landscape and visual context only



Wireline drawing. Morecambe: Maximum number scenario 35 x 290m WTGs

OS reference:	340939 E 461567 N	Horizontal field of view:	90° (cylindrical projection)	Camera:	Canon EOS 6D
Eye level:	30.74 m AOD	Principal distance:	522 mm	Lens:	EF50mm f/1.4 USM
Direction of view:	240°			Camera height:	1.5 m AGL
Nearest turbine:	46.2 km			Date and time:	19/04/2022, 11:16

Figure: 18:54
Viewpoint 7: Heysham Head, Chapel Hill The-Barrows
 © Crown copyright and database rights (2024) Ordnance Survey 0100031673.